

*The
Marcham
Society*

OCTOBER 2024
Volume 7, Issue 9

Newsletter

Our next outing on 10th October 2024

Standing with Giants
British D-Day 80th Memorial Exhibition
'For Your Tomorrow' at Stowe Gardens



Normandy D-Day Installation © Jules and Bean

Thursday 10th October 2024 at 11am

Stowe Gardens in Buckinghamshire is the UK's official host for the British D-Day 80th exhibition 'For Your Tomorrow', which is a memorial installation to soldiers killed in the D-Day landing on 6th June 1944

This large-scale art installation consists of 1,475 silhouettes of Second World War military personnel. *For Your Tomorrow – the People's Tribute* was created by community artist, Dan Barton with the number of figures in the display representing the number of fatalities under British command on 6th June 1944. The work was originally installed at the British Normandy Memorial in Ver-sur-Mer, France.

To join the outing, contact: shirley.marsoc@gmail.com

THE ASTRONOMY GROUP

A round-up of astronomy sightings during September, followed by

“Biodiversity/evolution effects of bolide impacts”

by Julian Parfitt



***Thursday 17th October 2024 at 7 pm in the Small Hall,
Marcham Centre, Barrow Close, OX13 6TY***

THE OCTOBER TALK

“Fungi of Oxfordshire’s Golden Triangle”

by Judy Webb

***Monday 28th October 2024 at 7.15 for 7.45 pm in the Main Hall,
Marcham Centre, Barrow Close, OX13 6TY***



Fungi come in a multitude of forms: from mushrooms, toadstools, brackets and boletes to puffballs, stinkhorns, coral fungi, rusts, smuts and mildews. Many are essential to plant and tree growth, some cause disease, many are important in decay and re-cycling. All sorts in many colourful forms are to be found in the exceptionally wildlife-rich area on the Jurassic Corallian sands of the Marcham - Cothill - Frilford area, the 'golden triangle'.

Judy Webb is a local ecologist who has been fascinated by fungi for many years and leads surveys for the Fungus Survey of Oxfordshire which is a local group who love fungi and are concerned with recording fungal species for conservation purposes. She rarely eats wild collected fungi and will happily tell you why.

Thursday 12th September - The Midweek Walk

The Group set off from the Trout Inn, St John's Lock, Faringdon Road, Lechlade GL7 3HA



The Astronomy Group met on Thursday 12th September

A round-up of Astronomy sightings over the summer months followed by a short film titled *'Lost Alignment'* presented by Aaron Simpkins

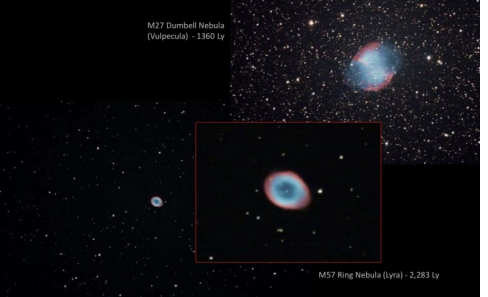
Mike Grieg 19th July 21:45



Anson Field 12th Aug 2024 - 23:15
© Alison Lawrie



Marcham 28th Aug 2024 23:00



Marcham 27th July 2024 02:00-04:00



Eagle Nebula M16 (Serpens) - 14th July 23:30

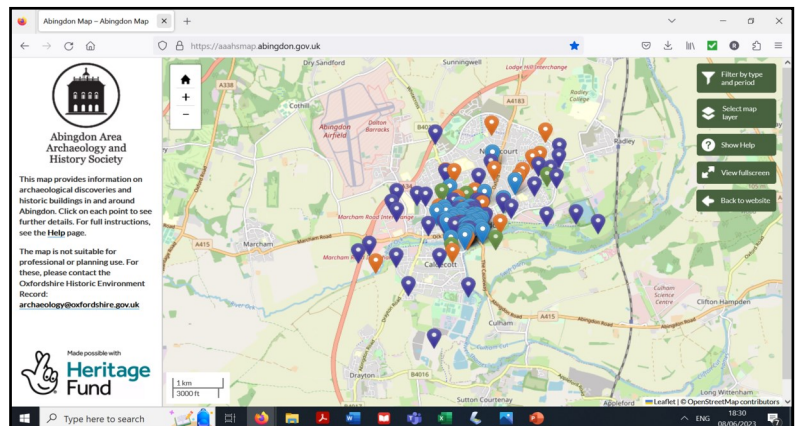
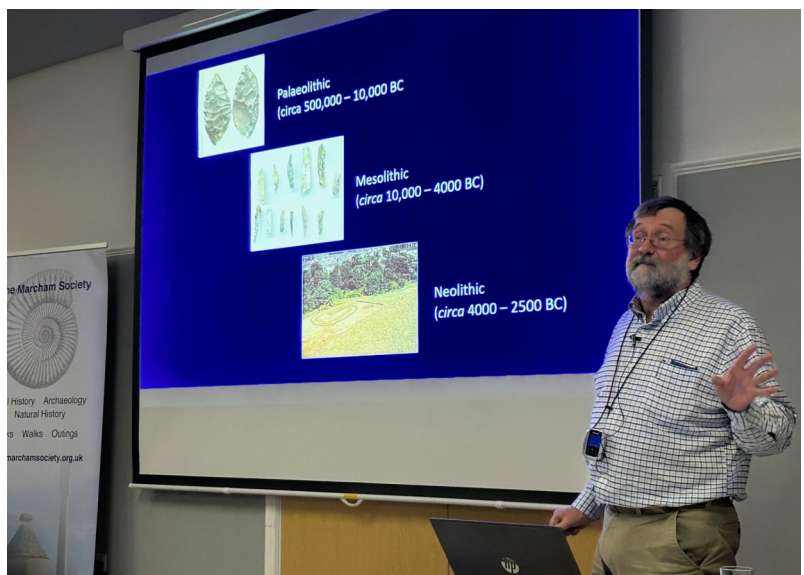


Film: *Lost Alignment* - Aaron Simpkins



'England's Oldest Town? The Archaeology of Abingdon'

A talk by Roger Thomas given on Monday 23rd September 2024



A coin of the British Iron Age ruler Cunobelin (Shakespeare's Cymbeline), found in the centre of Abingdon. Cunobelin ruled a large area of south-east England, possibly including Abingdon, in the decades before the Roman invasion of AD 43.

Roger also presented the interactive of Archaeological sites around Abingdon and the link to the website is given below.

Roger is a professional archaeologist who grew up in Abingdon. He spent most of his career working in archaeological roles at English Heritage (now Historic England). He is also currently chairman of the Abingdon Area Archaeology and History Society (AAAHS).

Abingdon famously claims to be 'the oldest town in England', the oldest continuously occupied town in the country. Taking this claim as a starting point, Roger's talk looked at the impressively rich archaeology of Abingdon and its environs, which has major sites and discoveries of every period from the prehistoric onwards. The talk also considered the relationship between the archaeology of Abingdon and that of Marcham, including the important Roman temple site at Manor Farm, Marcham.

To access the Abingdon interactive map : <https://aaahsmap.abingdon.gov.uk/>

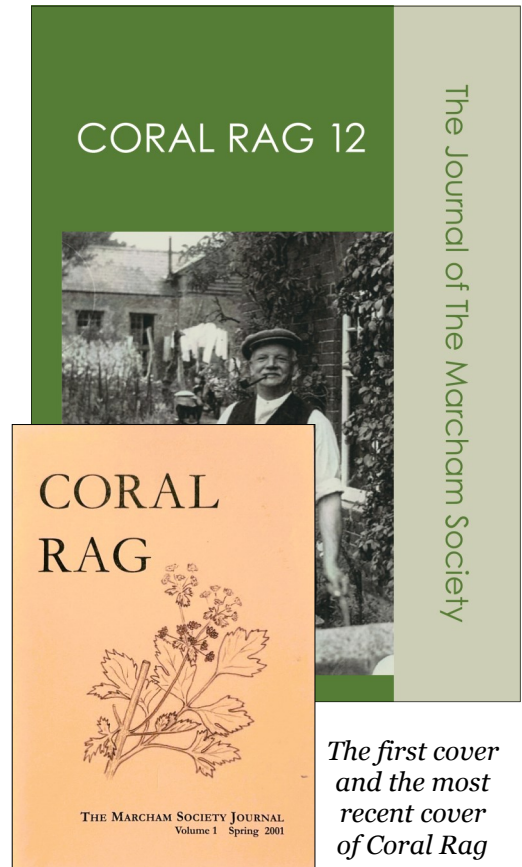
'CORAL RAG'

Coral Rag is the Journal of the Marcham Society and its name is taken from the local coral rag-stone (Corallian limestone) on which Marcham stands. To quote Eric Dunford who wrote the foreword of the first volume in 2001:

"This title was chosen to show that we want to contain some lighter material as well as the more serious reports, but it also draws attention to the fact that our whole environment is based on the Corallian rocks beneath our feet and that most of our old buildings are made of this 'rag' stone."

Since then there have been another eleven volumes published with a variety of articles covering Archaeology, Natural History, History and many other topics that relate to the parish of Marcham and the surrounding countryside.

Most of these past volumes are still available in the Village Shop or from Sheila Tilley at our regular meetings.



CORAL RAG 13

To celebrate the thirtieth year of the Marcham Society, we would like to publish a further volume, Coral Rag 13. We have a few articles already submitted but we would like to invite the members to write a contribution that involves the natural history, the past or more recent history of the village or its parish.

We would hope to review and collate articles by the end of January with the plan to be in print by Summer 2025. If you have a suggestion or an interest in writing a short piece, please contact:

Sheila Tilley: sheilajtilley@gmail.com

The Midweek Walk

The October Midweek Walk will be on

Thursday 3rd October
meeting at the
White Horse, Stonesfield,
Witney, OX29 8EA at 12.30

This pub has been unavailable to us for years but it has recently reopened as a community pub. It is a super walking area and our route drops down to where the Roman Road, Akeman Street, crosses the River Evenlode and then follows the river to Ashford Bridge.

The start of the walk will be as usual at 1.30 pm.



For more details on this or future walks please contact Eric Dunford:
e.dunford@btinternet.com
01865 391439

Programme for 2024

*Unless otherwise announced, evening meetings will be held in the Main Hall of the Marcham Centre.
Doors open at 7.15 pm for 7.45 pm start.*

=====
Thursday 3rd October: Midweek Walk 12.30 pm
See on the left of this page

Thursday 10th October: Trip to Stowe Gardens 11 am

Thursday 17th October: Astronomy Group 7pm

"Biodiversity/evolution effects of bolide impacts" by Julian Parfitt

Monday 28th October: The Monthly Talk

"Fungi of Oxfordshire's Golden Triangle" by Judith Webb

Thursday 7th November: Midweek Walk 12.30 pm

Thursday 14th November: Astronomy Group 7pm

"DIY Star maps" by Bob Anderson; Choosing a telescope

Monday 25th November: The Monthly Talk

"Excavations at Besselsleigh Manor" by Jane Harrison

Thursday 12th December: Astronomy Group 7pm

Monday 23rd December: The Christmas Party

The programme of events for 2024-25 is now available on our website: www.marchamsociety.org.uk



DID YOU WORK IN SOCIAL CARE BETWEEN 1979 AND 2010?

SEEKING PEOPLE FOR ORAL HISTORY PROJECT

Hi! My name is Freya. I am a PhD student in History at Oxford University, researching social care work.

I am seeking to chat to people who worked in social care in any capacity in England and Wales between 1979 and 2010 about their experiences.

The purpose is to understand more about your work and working conditions; your everyday life; and the social care system.

You and your place of work can remain anonymous. We can speak over the phone, online or in person, at a time and place of your choosing.



CONTACT ME IF YOU ARE INTERESTED OR WANT MORE INFO



freya.willis@magd.ox.ac.uk

Research ethics ref: R90935/RE001

Marcham and District News

MAD News for October and also past issues are available on line

<https://www.madnews.co.uk/index.php>

If you would like to help with the production of MAD News please contact the editor : editor@madnews.co.uk